



Sales / Technical Support: +1-818-338-7788 Option 3
 Email: sales@autecpower.com

Available outputs:

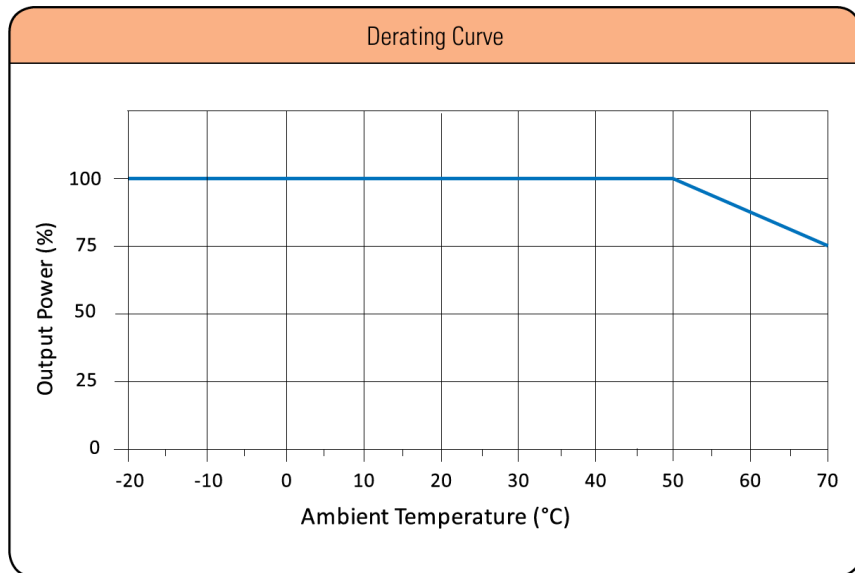
<u>Model</u>	<u>Output Voltage</u>	<u>Max. Load</u>	<u>Min. Load</u>	<u>Ripple</u>
SPJM60-051-XY	5.2V	10A	0.0A	1.25%
SPJM60-120-XY	12V	5.4A	0.0A	1%
SPJM60-150-XY	15V	4.33A	0.0A	1%
SPJM60-240-XY	24V	2.7A	0.0A	1%
SPJM60-480-XY	48V	1.35A	0.0A	1%
SPJM60-3000	V1=5.2V, V2=12.5V, V3= -12.8V	V1=8.0A, V2=3.0A, V3=0.5A	V1=0.5A, V2=0.1A, V3=0.0A	1.25%
SPJM60-3001	V1=5.2V, V2=23.8V, V3= -12.8V	V1=8.0A, V2=1.5A, V3=0.5A	V1=0.5A, V2=0.1A, V3=0.0A	1.25%
SPJM60-3002	V1=5.2V, V2=14.6V, V3= -16.2V	V1=8.0A, V2=2.5A, V3=0.5A	V1=0.5A, V2=0.1A, V3=0.0A	1.25%
SPJM60-3003	V1=3.3V , V2=5.2V, V3= -12.8V	V1=6.0A, V2=3.0A, V3=0.5A	V1=0.5A, V2=0.1A, V3=0.0A	1.25%

Connectors		
J1	Pin 1	AC NEUTRAL
	Pin 2	AC LINE
Spade Connector		EARTH
J2	Pin 1	V1
	Pin 2	V1
	Pin 3	RTN
	Pin 4	RTN
	Pin 5	V3
	Pin 6	V2
J3	Pin 1	+V1 SENSE
	Pin 2	-V1 SENSE

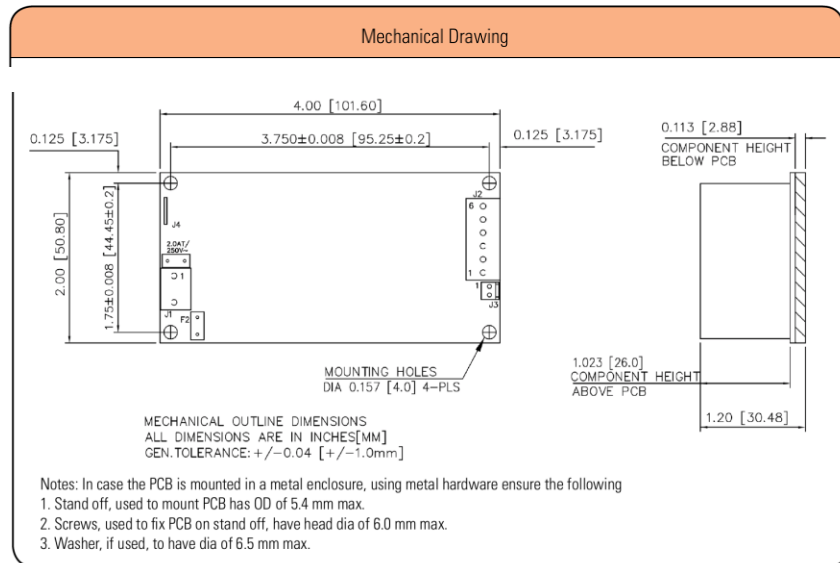


Sales / Technical Support: +1-818-338-7788 Option 3
 Email: sales@autecpower.com

Mechanical Specifications	
AC Input Connector (J1)	Molex: 26-60-4030 or equivalent Mating: 09-50-3031; Pins: 08-50-0106
EARTH	Molex: 19705-4301 Mating: 190030001
DC Output Connector (J2)	Tyco: 640445-6 or equivalent Mating: 647402-6; Pins: 3-647409-1
Signal Connector (J3)	Molex: 22-23-2021 or equivalent Mating: 22-01-2021
Dimensions	4.0 x 2.0 x 1.2 inches (101.6 x 50.8 x 30.48 mm)
Weight	150 g
EMC*	
CE Mark	Complies with LVD Directive
Conducted Emissions	EN55022-B, CISPR22-B, FCC PART15-B
Static Discharge	EN61000-4-2, Level-3
RF Field Susceptibility	EN61000-4-3, Level-3
Fast Transients/Bursts	EN61000-4-4, Level-3
Radiated Emissions	EN55022-B, CISPR22-B, FCC PART15-B To be controlled in end system
Surge Susceptibility	EN61000-4-5, Level-3
Harmonic Current	EN61000-3-2, Class A
Safety*	
Safety Standard(s)	EN60601-1, IEC60601-1 (ed.3), ANSI / AAMI ES 60601 - 1, CSA C22.2 No. 60601-1



Mechanical drawing single-output



Mechanical drawing mutli-output

