





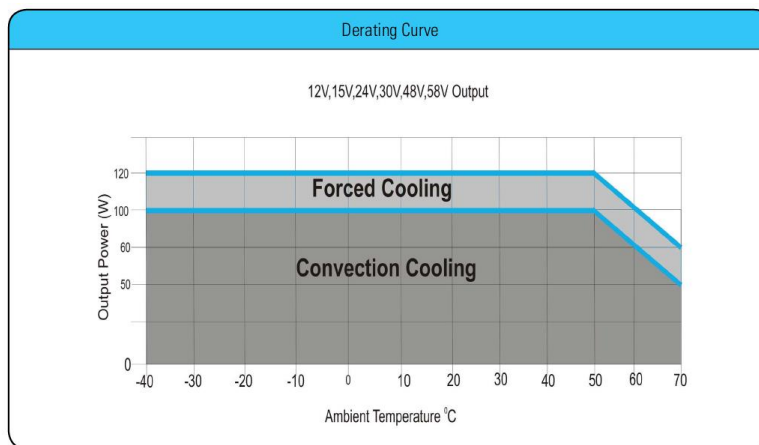
Sales / Technical Support: +1-818-338-7788 Option 3  
 Email: [sales@autecpower.com](mailto:sales@autecpower.com)

Available outputs:

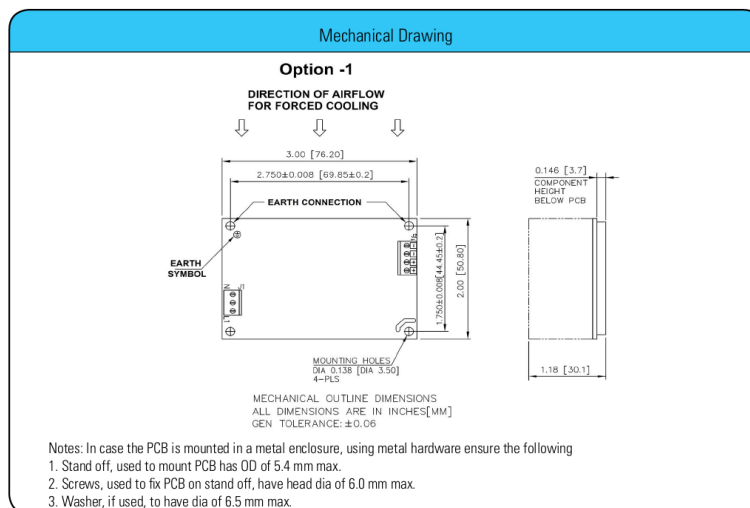
Model	Output Voltage	Max. Load	Min. Load	Ripple
SPJM120-120-XY	12V	8.33A / 10A AIR	0.0A	1%
SPJM120-150-XY	15V	6.67A / 8A AIR	0.0A	1%
SPJM120-240-XY	24V	4.16A / 5A AIR	0.0A	1%
SPJM120-300-XY	30V	3.33A / 4A AIR	0.0A	1%
SPJM120-480-XY	48V	2.08A / 2.5A AIR	0.0A	1%
SPJM20-580-XY	58V	1.72A / 2.07A	0.0A	1%

Mechanical Specifications	
AC Input Connector (J1) Option 1	Molex: 39357-0003 Tyco-2-17761 12-3
Option 2	Molex: 1722861103 (Mating conn: Molex 172256 1003)
DC Output Connector (J2) Option 1	Molex: 39357-0004 Tyco-2-17761 12-4
Option 2	Molex: 1722861 104 (Mating conn: Molex 172256 1004)
Dimensions	3 x 2 x 1.18 inches (76.2 x 50.8 x 30.1mm)
Weight	200gm Max.
EMC	
CE Mark	Complies with LVD Directive
Conducted Emissions	EN55022-B, CISPR22-B, FCC PART 15-B
Static Discharge	EN61000-4-2, Level-3
RF Field Susceptibility	EN61000-4-3, Level-3
Fast Transients/Bursts	EN61000-4-4, Level-3
Radiated Emissions	Level A radiated, Level B radiated with external core (King core K5B RC 25x12x15-M in input cable with 5 Turns)
Surge Susceptibility	EN61000-4-5, Level-3
Harmonic Current	EN61000-3-2, Class D
Safety	
Safety Standard(s)	IEC/EN 60601-1 Edition 3.0 + AM1, ANSI/AAMI ES60601-1 and CAN/CSA -C22.2 No. 60601-1
Approval Agency	Nemko, UL, C-UL

Connectors		
J1	Pin 1	AC LINE
	Pin 2	NOT FITTED
	Pin 3	AC NEUTRAL
J2	Pin 1,2	V1 -VE
	Pin 3,4	V1 +VE



Mechanical drawing single-output with Terminal Screws



Mechanical drawing single-output with Molex Terminal

