

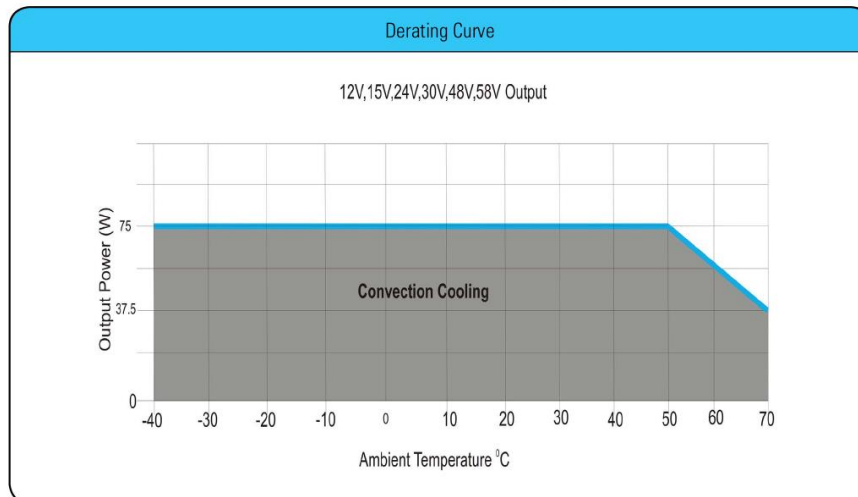


Sales / Technical Support: +1-818-338-7788 Option 3
 Email: sales@autecpower.com

Available outputs:

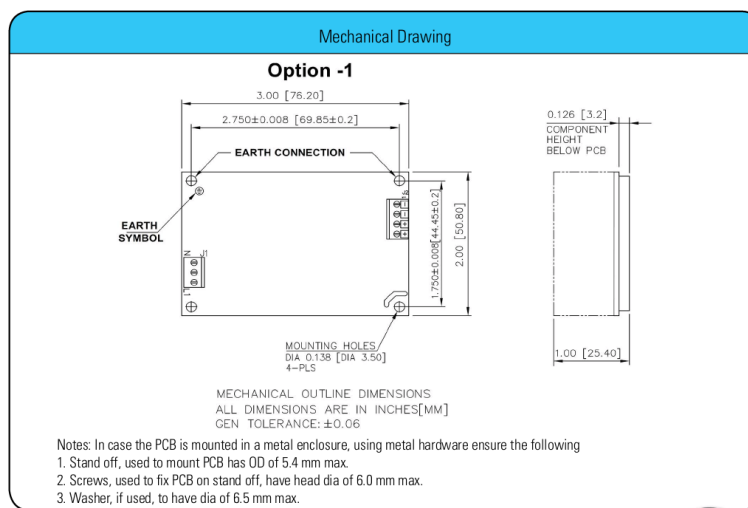
Model	Output Voltage	Max. Load	Min. Load	Ripple
SPJ75-120-XY	12V	6.25A	0.0A	1%
SPJ75-150-XY	15V	5.00A	0.0A	1%
SPJ75-240-XY	24V	3.12A	0.0A	1%
SPJ75-300-XY	30V	2.50A	0.0A	1%
SPJ75-480-XY	48V	1.56A	0.0A	1%
SPJ75-580-XY	58V	1.29A	0.0A	1%

Connectors		
J1	Pin 1	AC LINE
	Pin 2	NOT FITTED
	Pin 3	AC NEUTRAL
J2	Pin 1,2	V1 -VE
	Pin 3,4	V1 +VE



Mechanical Specifications			
AC Input Connector (J1) Option 1	Molex: 39357-0003 Tyco: 2-1776112-3	Option 2	Molex: 1722861103 (Mating conn: Molex 1722561003)
DC Output Connector (J2) Option 1	Molex: 39357-0004 Tyco: 2-1776112-4	Option 2	Molex: 1722861104 (Mating conn: Molex 1722561004)
Dimensions	3 x 2 x 1 inches (76.2 x 50.8 x 25.4 mm)		
Weight	180gm Max.		
EMC			
CE Mark	Complies with LVD Directive		
Conducted Emissions	EN55022-B, CISPR22-B, FCC PART15-B		
Static Discharge	EN61000-4-2, Level-3		
RF Field Susceptibility	EN61000-4-3, Level-3		
Fast Transients/Bursts	EN61000-4-4, Level-3		
Radiated Emissions	Level A radiated, Level B radiated with external core (King core K5B RC 25x12x15-M in input cable with 5 Turns)		
Surge Susceptibility	EN61000-4-5, Level-3		
Harmonic Current	EN61000-3-2, Class D		
Safety			
Safety Standard(s)	EN60950-1, IEC 60950-1:2005 (Ed 2), UL 60950-1 Ed 2, CAN/CSA C22.2 No. 60950-1-07 Ed 2, GB4943. 1-2011 ; GB9254-2008 ; GB17625. 1-2012		

Mechanical drawing single-output with Terminal Screws



Mechanical drawing single-output with Molex Terminal

